

Empowering the Future of Education

This platform offers a comprehensive EdTech ecosystem, streamlining the entire student journey from enrollment to graduation while providing administrators with total control over curriculum, batch scheduling, and financial operations.



Student Learning Portal

Deliver personalized, engaging learning experiences.



Teacher & Coordinator Portal

Simplify curriculum delivery and instructional management.



Admin & Admission Portal

Optimize operational efficiency and financial workflows.

Experience a unified solution that harmonizes academic delivery, lead management, and institutional finance.





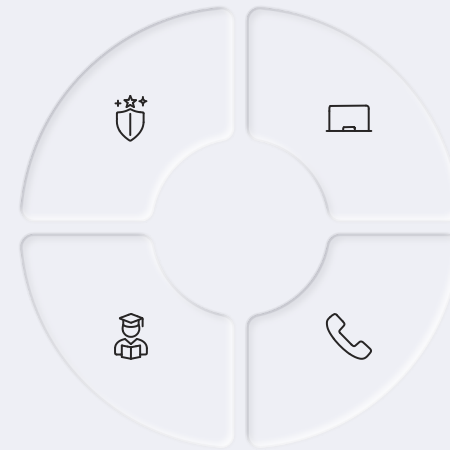
Stakeholders

Super Admin

Course Admin & Curriculum Coordinator

Students & Parents

Learners and guardians engaging with the platform



Teachers

Instructors delivering live sessions and managing homework

Admission & Sales

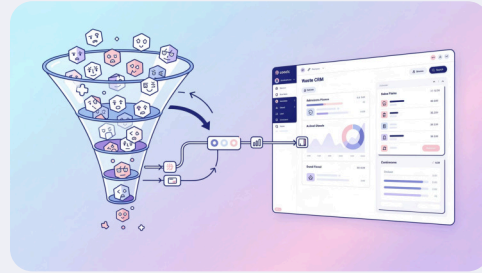
Admission Counsellors, Call Center Executives, BDM (Corporate Sales)

A Multi-Module Platform



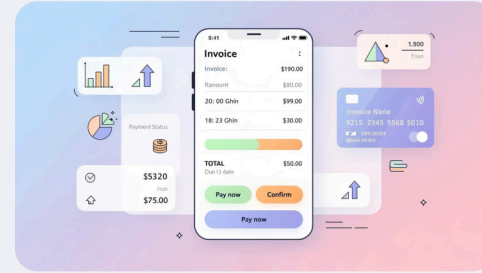
LMS

Learning Management System



CRM

Lead & Admission Management



Finance

Billing & Payments



Comms

Communication & Monitoring Tools

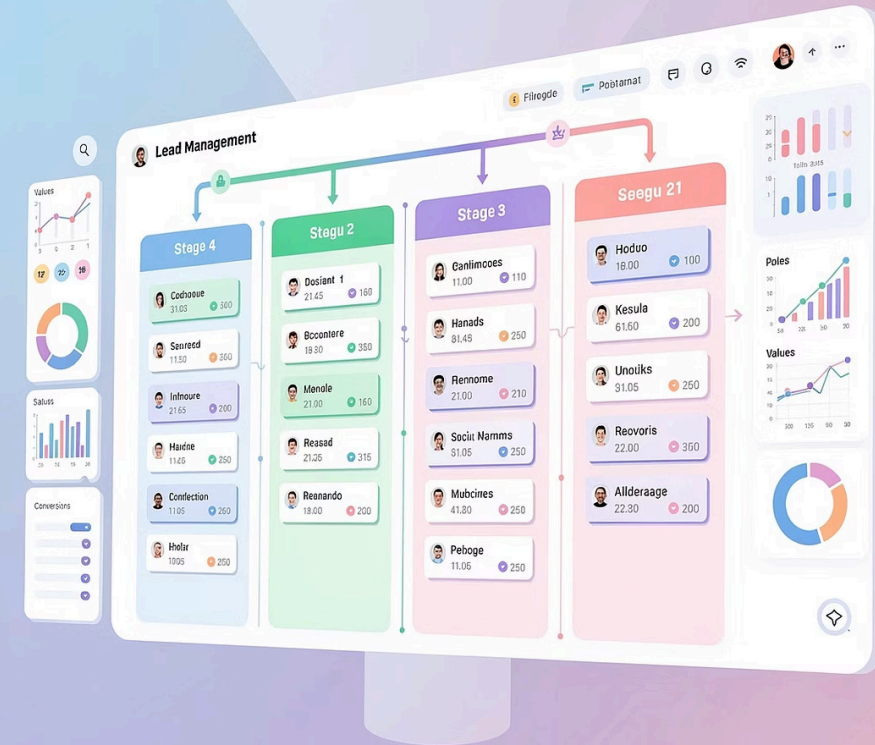
Lead Management

Lead Sources & Types

- **Sources:** Web form, Manual entry, CTI integration
- **Types:** Individual & Corporate
- Round-robin assignment to call center executives
- Notifications via Email and WhatsApp

Lead Stages

- 1 Open → Contacted → Contact in Future
- 2 Demo Requested → Demo Completed
- 3 Unqualified → Converted



Access to Subscribed Courses

- Instantly access all enrolled courses from a single, organised dashboard
- Browse videos, notes, assignments, and resources — neatly organised by topic and chapter
- Track completion progress and stay on top of learning goals

Scheduled Meeting & Class Tracking

- View all upcoming live classes and scheduled meetings at a glance from the dashboard
- Stay on schedule with timely notifications and reminders
- Revisit recorded sessions anytime for review and revision (where enabled)

Extra Class Request for Doubts or Missed Sessions

- Request extra classes to catch up on any missed sessions
- Get additional support for specific chapters or topics
- Book dedicated doubt-clearing sessions with ease

Learning Progress Monitoring

- Track completion progress chapter by chapter
- Gain insights from test and evaluation performance analytics
- Receive personalised improvement suggestions based on results

Module 1: Introduction

Module 2: Basics

Assignments, Assessments, and Quizzes

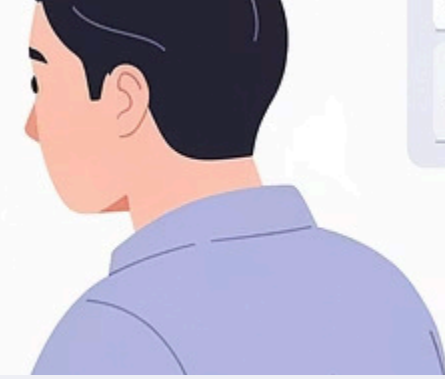
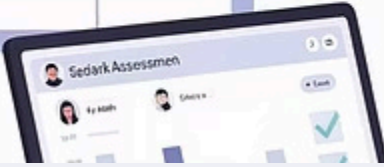
- Stay on top of assignments, assessments, and quizzes — all organised with clear deadlines to keep learning on track.
- Submissions support both objective and subjective formats; subjective answers can be uploaded as scanned documents.

Feedback Submission

- Share feedback on courses and individual sessions directly from the platform
- Drive improvements in teaching quality and course delivery
- Enable continuous academic growth through real learner insights

Project	Project						
11	12	23	20	21	22	23	
					Review		
28							
Reviect							

09:00 - Science
10:00 - 10:00 - Reading



TEACHER PORTAL

Batch-wise Course & Chapter Evaluation

- Evaluate assigned subjects, courses, and chapters for each specific batch
- Track assessments in a structured, chapter-by-chapter format

Calendar-Based Class Schedule Management

- Monitor student understanding at a granular level
- Intervene early with targeted academic support where needed

Notifications & Alerts

Teachers receive real-time notifications for:

Upcoming classes	Schedule updates
Extra class requests from students	Administrative announcements

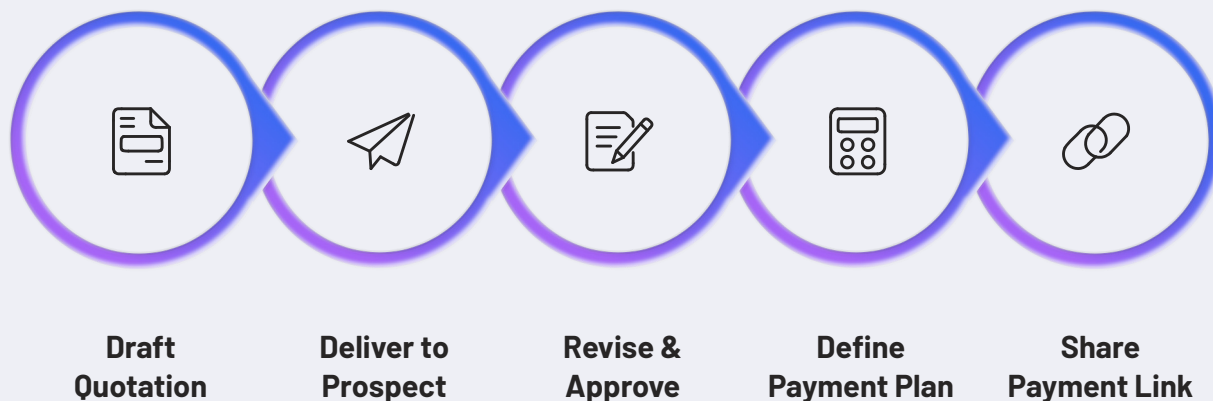
Academic Coordination Support

Keeping every student's learning journey on track — without interruption

- Approve and schedule extra classes requested by students
- Facilitate dedicated doubt-clearing sessions
- Coordinate recovery sessions for missed classes

The Admission Journey

This structured 7-step workflow guides counsellors from initial quotation drafting through to student onboarding. Integrated CTI tools ensure seamless call capture and real-time lead tracking throughout the process.



CTI Integration

Inbound Calls

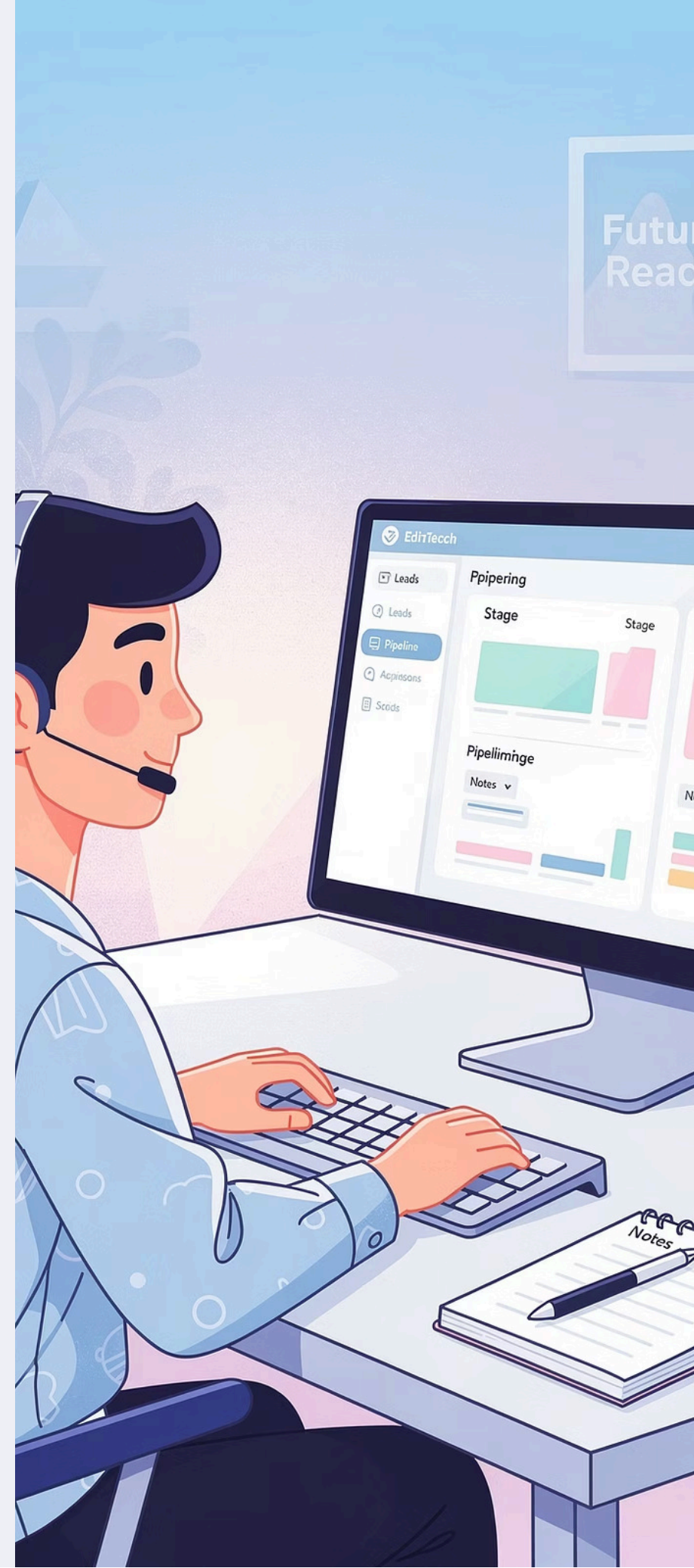
Incoming calls are automatically captured and mapped to existing leads via phone number lookup — ensuring no prospect is missed.

Outbound Calls

Counsellors can click-to-call directly from the CRM; all call details are automatically logged against the lead record.

Key Rules & Notes

- Quotations can be revised and re-submitted for approval before finalising
- Payment structures are generated based on course-level fee and EMI configuration
- Lead conversion triggers automatic credential issuance to the student
- All admission activity is logged for audit and reporting purposes





Curriculum Management

- Create and manage courses end-to-end
- Structure lessons for clear, progressive learning
- Organise and oversee student batches with ease

Role Creation & Role-Based Access Control (RBAC)

- Define and create custom roles tailored to your organisation
- Assign permissions and manage access levels for all user types
- Supports teachers, coordinators, counsellors, and more
- Ensure secure, structured access across the entire platform

Schedule & Teacher Assignment Management

- Get a clear view of all teacher assignments across batches, courses, and sessions
- Quickly reassign a replacement teacher if someone is unavailable or misses a class
- Reschedule sessions with minimal disruption
- Maintain uninterrupted learning continuity at all times

Centralized Monitoring & Control

- Full visibility into teacher–batch assignments
- Clear oversight of course and chapter allocation
- Real-time access to class schedules
- Track student participation and engagement at a glance

Ensuring complete visibility across all academic workflows.

Feedback Monitoring & Response Management

- Collect and review student feedback
- Monitor teacher performance through feedback
- Surface and address course-related concerns
- Feedback insights drive targeted corrective actions:
 - Schedule additional sessions where needed
 - Reassign or update instructors as required
 - Continuously improve course delivery quality

Communication, Recording & Privacy

Messaging & Communication

- Integrated with Video conferencing tools
- No direct contact sharing allowed
- Monitoring via coordinator

Recording & Compliance

- All sessions recorded
- Random audits supported
- Anonymous monitoring capability

Privacy & Security Controls

- No sharing of personal contact details between users
- Monitoring via recordings and message logs
- Mandatory disclaimers displayed to all users



Reporting, Certificates & Ticketing



Reporting & Analytics

Course completion reports, engagement analytics, and custom reporting dashboards for administrators.



Certificate Management

Issued upon: course completion, $\geq 70\%$ attendance, and full payment completion.



Ticketing System

Issue creation, round-robin assignment, comments & collaboration, file attachments, and ticket ownership transfer.





Platform Summary

The EdTech Learning & Administration Platform is a fully integrated, multi-module system designed to unify academic delivery, CRM, and financial workflows under one roof.

4

Core Portals

Student, Teacher,
Counsellors, & Admins

23

Functional Modules

End-to-end feature
coverage

8

Stakeholder Roles

With RBAC and field-level
security

6

Integration Points

Video Conferencing, CTI,
payments, comms, etc